



# 防疫大作戰

## A Brief Guide Towards Epidemic Prevention

免驚！安心上課到期末！

No Worries! We'll get through it!

# Table of Contents



01

個人篇

Individual Precautions

02

公共篇

Public Precautions

03

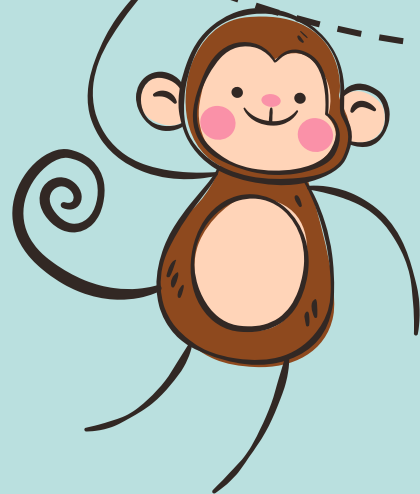
團體篇

Group Precautions

04

住宿篇

Accommodation Precautions



# 個人篇 Individual Precautions



1. 自備口罩和小瓶乾洗手液，可隨身需要時使用。
2. 有發燒或上呼吸道症狀時，請戴口罩、勤洗手並就醫（校內家醫科門診時間：星期一～星期五 上午8：30-11：50）。生病在家休息。
3. 發燒或上呼吸道症狀時，請主動告知旅遊史和群聚史（其他同學是否有人也有此症狀），同時通知體衛組（衛生保健）07-5252250或用line通知。

4. 隨時查閱疾病管制署網站。勿聽信不實的訊息，以免產生恐懼。
  1. Please carry your own mask and alcohol hand sanitizer.
  2. If fever or respiratory symptoms occur, please wear a mask, wash your hands often and seek medical treatment. Stay at home and rest.

**(The campus clinic is opened on Monday to Friday 8:30-11:30a.m.)**

3. Please refer to the CDC website often. To avoid unnecessary panic, do not listen to false rumors.



# 公共篇

## Public Precautions



01. 系所備有額溫槍，一有感覺發燒時可到系所先量體溫。急需口罩者（有發燒或上呼吸道症狀），可到系所辦公室領取。

02. 各大樓出入口備有乾洗手液，歡迎使用。

01. Each department provides forehead thermometers. If feeling ill, please report to the department office for temperature measurement. If mask is needed urgently (those who have a fever or respiratory symptoms), please report to the department office.

02. Alcohol hand sanitizers are available at every exits of buildings. Feel free to use them.

# 公共篇(餐廳)-2

## Public Precautions

1. 進出餐廳師生時請佩戴口罩，並使用餐廳門口的乾洗手液消毒手部。
2. 自助餐前放置立牌，請教職員生夾菜時要配戴口罩，勿交談，避免飛沫傳染。
3. 疫情期間鼓勵師生自帶環保餐具使用。
4. 疫情期間吃飯時避免交談，用餐完後盡快離開餐廳。



# 團體篇

## Group Precautions



1. 上課一定要開窗，不可開冷氣，保持空氣流通。
2. 與他人講話時，請保持1公尺的距離。
3. 討論功課或聊天時，請改到戶外場所降低感染的風險。

1. **Keep windows opened during class. Do not turn on the air-conditioner. Maintain good air circulation.**
2. **Please keep 1 meter away from others when talking.**
3. **When discussing school work or chatting with others, please choose outdoor locations to decrease the risk of infection.**

# 國立中山大學鄰近健保特約藥局概況-口罩購買地點及注意事項

項目	口罩購買說明
對象	<ul style="list-style-type: none"><li>▶ 本國生：持「<b>健保卡</b>」購買。</li><li>▶ 外籍生：持「<b>居留證</b>」購買。</li></ul>
數量	每週-最多2片(7天後可再重新購買2片)。
金額	5元/片。
規則	<ul style="list-style-type: none"><li>▶ 身分證尾數「<b>單數</b>」：週一、週三、週五。</li><li>▶ 身分證尾數「<b>雙數</b>」：週二、週四、週六。</li><li>▶ 週日不限制只要有開都可購買；“0”是偶數(雙數)唷！</li></ul>
代購	每 <b>1</b> 人最多只能代購持 <b>1</b> 張健保卡。

**鄰近捷運站，排列如下(前往購買請致電詢問庫存量)**

1. 快安藥局 高雄市鼓山區濱海一路32號 07-5514090
2. 長庚藥局 高雄市鹽埕區五福四路163號1樓 07-5513436
3. 健康藥局 高雄市鹽埕區大仁路102號 07-5510738
4. 昇安藥局 高雄市鹽埕區瀨南街225號1樓 07-5216438
5. 和生藥局 高雄市鹽埕區建國四路178-2號 07-5315739
6. 宏恩藥局 高雄市鹽埕區教仁里瀨南街133號 07-5211318
7. 宏光藥局 高雄市鹽埕區七賢三路92號1樓 07-5211299
8. 利百加藥局 高雄市鹽埕區大公路96號 07-5511098
9. 捷康藥妝藥局 高雄市前金區七賢二路396號1樓 07-2166099

# NHI Cards or Resident Certificate are required to purchase Masks

- 1** Limited to **two masks** per purchase. Within a seven-day span, you may only make one purchase, 2 masks for NT\$10.
- 2** Based on the last digit of your NHI card or Resident Certificate number, you may purchase on the following days:  
Odd: Monday, Wednesday, Friday  
Even: Tuesday, Thursday, Saturday
- 3** Sunday: **No limitation to the last digit of your NHI or Resident Certificate number**, you can make a purchase at a NHI contracted pharmacy.
- 4** **Purchase by proxy:** only one purchase by proxy per person; purchase must be made on the day allowed for the proxy card.
- 5** 200 adult masks and 50 child size masks will be provided to every NHI contracted pharmacy daily but the amount may be adjusted according to needs.

<b>1. Kuai An Pharmacy</b> (快安藥局)	No. 32, Binhai 1st Road, Gushan District.	075514090
<b>2. Heng Sheng</b> (恆生藥局)	No. 32, Binhai 1st Road, Gushan District.	075514090
<b>3. Chang Geng Pharmacy</b> (長庚藥局)	Near Yanchengpu MRT station, No. 163, Wufu 4th Road, Yancheng District.	075513436
<b>4. Hong Guang Drug Store</b> (宏光藥局)	No. 92, Qixian 3rd Road, Yancheng District.	075211299
<b>5. Hong En Pharmacy</b> (宏恩藥局)	No. 133, Lainan Street, Yancheng District.	075211318



Any mask issues: Please call 1922、1919 (toll-free)  
NSYSU Health Service Division: 075252000 #2251-2254



# 住宿篇



## Accommodation Precautions

外宿生或住宿生~~每日使用500ppm漂白水擦拭消毒寢室，並保持通風。

Students living in dorms or outside the campus should use 500ppm bleach to wipe and sanitize their rooms. Please maintain air circulation.

Water--10L

✓ 正確泡製500ppm含氯漂白水

1:100 Bleach Dilution

漂白水泡製方式

以漂白水：清水 =  
1：100 的比例，加入清  
水稀釋。

\*使用含氯漂白水（濃度至少需達 5%）



1250c.c  
保特瓶

8瓶



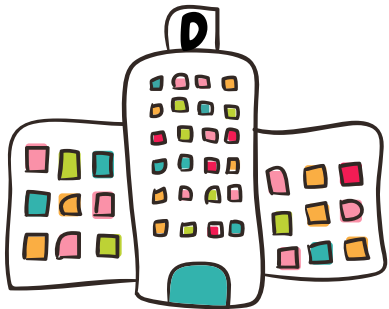
1罐



水桶畫線  
標記水量

Mark the water level

Bleach with 5% of  
Chlorine—100 mL



謝謝您的配合！  
我們關心您的健康～

“Thank you for cooperating!  
We care for your health!”

—中山大學 衛生保健組  
NSYSU Health Service Division



中山大學  
衛生保健組  
line



備註：目前line使用於防疫期間，防疫期過後即關閉使用，  
若有問題請上中山大學衛生保健組 臉書網頁留言