

110年 back to school

開學了！校園防疫不鬆懈



猴同學說：
忘了戴口罩，
錯誤示範，
請勿模仿



Table of Contents



01

個人篇

Individual Precautions

02

公共篇

Public Precautions

03

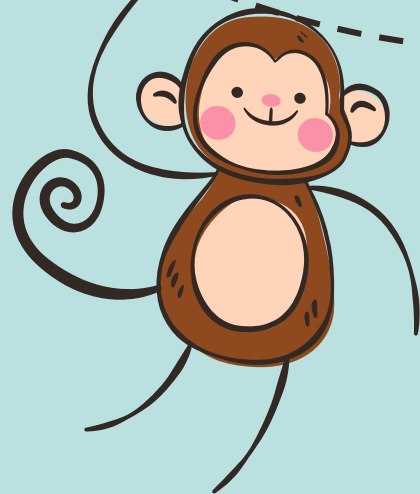
團體篇

Group Precautions

04

住宿篇

Accommodation Precautions



個人篇 Individual Precautions

1. 自備口罩和小瓶乾洗手液，可隨身需要時使用。
2. 有發燒或上呼吸道症狀時，請戴口罩、勤洗手並就醫（校內家醫科門診時間：星期一～星期五 上午8：30-11：50）。
3. 發燒請在家休息，有**長水痘和得流感**也請在家休息並通知系所或衛保組。
4. 有發燒時請上發燒自主回報系統填寫體溫，回報體溫，衛保組協助並關懷

<https://urgent-osa.nsysu.edu.tw/login> 或使用**QR code**

5. 隨時查閱疾病管制署網站。勿聽信不實的訊息，以免產生恐懼。

1. Please carry your own mask and alcohol hand sanitizer.
2. If fever or respiratory symptoms occur, please wear a mask, wash your hands often and seek medical treatment. Stay at home and rest. If you have a fever, please enter the Temperature Reporting Platform and fill in your temperature. Scan QR code

<https://urgent-osa.nsysu.edu.tw/login>

(The campus clinic is opened on Monday to Friday 8:30-11:30a.m.)

3. Please refer to the CDC website often. To avoid unnecessary panic, do not listen to false rumors.



體溫自主回報-填寫介面

公共篇-1

Public Precautions



01. 系所備有額溫槍，一有感覺發燒時可到系所先量體溫。急需
口罩者（有發燒或上呼吸道症狀），可到系所辦公室領取。

02. 各大樓出入口備有乾洗手液，歡迎使用。

01. Each department provides forehead thermometers. If feeling ill, please report to the department office for temperature measurement. If mask is needed urgently (those who have a fever or respiratory symptoms), please report to the department office.

02. Alcohol hand sanitizers are available at every exits of buildings. Feel free to use them.

公共篇(餐廳)-2

Public Precautions

1. 進出餐廳師生時請佩戴口罩，並使用餐廳門口的乾洗手液消毒手部。
2. 自助餐前放置立牌，請教職員生夾菜時要配戴口罩，勿交談，避免飛沫傳染。
3. 疫情期間鼓勵師生自帶環保餐具使用。
4. 疫情期間吃飯時避免交談，用餐完後盡快離開餐廳。



團體篇

Group Precautions



1. **上課一定要戴口罩和開窗，保持空氣流通。**
2. **與他人講話時，請保持1公尺的距離。**
3. **討論功課或聊天時，請改到戶外場所降低感染的風險。**

1. **Please wear masks and keep windows opened during class. Maintain good air circulation.**
2. **Please keep 1 meter away from others when talking.**
3. **When discussing school work or chatting with others, please choose outdoor locations to decrease the risk of infection.**

住宿篇



Accommodation Precautions

外宿生或住宿生~~每日使用500ppm漂白水擦拭消毒寢室，並保持通風。

Students living in dorms or outside the campus should use 500ppm bleach to wipe and sanitize their rooms. Please maintain air circulation.

Water--10L

✓ 正確泡製500ppm含氯漂白水

1:100 Bleach Dilution

漂白水泡製方式

以漂白水：清水 =
1：100 的比例，加入清
水稀釋。

*使用含氯漂白水（濃度至少需達 5%）

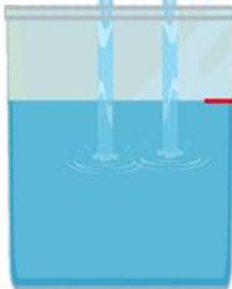


1250c.c
保特瓶

8瓶



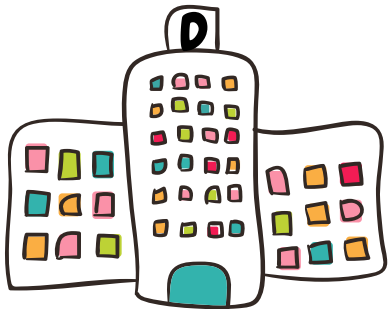
1罐



水桶畫線
標記水量

Mark the water level

Bleach with 5% of
Chlorine—100 mL



謝謝您的配合！
我們關心您的健康～

“Thank you for cooperating!
We care for your health!”



—中山大學 衛生保健組
NSYSU Health Service Division